



Southland Adventist<sup>™</sup>  
Christian School

# PROSPECTUS

## 2024



# PRINCIPAL'S MESSAGE

---

MR JOSHUA TAYLOR

Choosing a school for your child is clearly one of the most important decisions you will have to make. At Southland Adventist Christian School we understand that you want the best for your child. We also understand that children learn differently. For this reason we focus not only on what your child learns, but how they learn. We also recognise that learning goes beyond the classroom; that it extends to building confidence and resilience, taking responsibility, and engaging with others. These aspects of learning, and more, are explored through our Bible, values and pastoral care programmes.

Our supportive environment facilitates spiritual, academic and social growth in all members of the school community. By choosing Southland Adventist Christian School for your child, you will be placing them in a safe and intimate learning environment which will support their learning, foster their talents and encourage their development into confident and capable citizens of the community.

As a Christian school, we focus on providing a caring learning community; a community which is committed to developing personal excellence through academics, whilst at the same time, leading students into a personal relationship with Jesus. Our school provides nurture, promotes excellence and instils values. Southland Adventist Christian School is making a difference in the lives of children and their families – a difference that has far reaching effects. I am thankful for God's presence in our school and His blessing upon it.

I look forward to welcoming you and your child to our school community.



# OUR STAFF

## TEACHING STAFF



**JOSHUA  
TAYLOR**

PRINCIPAL



**REBECCA  
HANSEN**

ROOM 1



**VINETA  
AIOLUPOTEA**

ROOM 2



**ANN  
SMALES**

ROOM 3



**JULIE  
MENNIE**

ROOM 4



**JENNIFER  
HENRY**

ROOM 5



**HANNAH  
SQUIRES**

RELEASE TEACHER

## SUPPORT STAFF



**MARLENA  
PAYNE**

OFFICE  
ADMINISTRATOR



**PR TULAGA  
AIOLUPOTEA**

CHAPLAIN



**CHRISTINE  
BOEKHOUT**

TEACHER AIDE



**GEOFF  
HARVEY**

BUS DRIVER



# ABOUT US

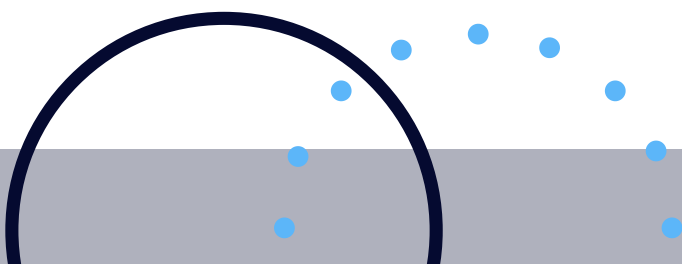
---

Southland Adventist Christian School is a state-integrated school with a comprehensive programme ranging from New Entrants to Year 8.

The school is owned and operated by the Seventh-day Adventist Church. It provides education in harmony with the beliefs, values, life-style and commitment of the church. Emphasis is placed on the development of a Christian character and a life of service in the community.

The first Seventh-day Adventist School in Invercargill was opened in 1955. By 1968 conditions had become a little cramped, so a new school was built on Bainfield Road in Waikiwi. In 2021, the school moved to a new building at a new site on Durham Street, Waikiwi.

The school is run by the School Board consisting of members elected by the parents, Seventh-day Adventist Church proprietor appointees, the principal and a staff representative.





# OUR STRENGTHS

- A commitment to teaching Christian values
- Enthusiastic and caring teachers and staff
- Values based education
- A focus on teaching character as much as academics
- A daily Bible programme
- New school building and spacious grounds
- A hall for events and physical education during bad weather
- School bus offering door-to-door service, which is also used for excursions
- Regular communication between school and home
- Parents are encouraged to be involved in school activities
- A large number of digital devices including iPads and Chromebooks



# OUR AIMS

- Provide a spiritual environment that actively challenges children to develop a personal relationship with Christ.
- Encourage children to become decision makers and problem solvers; having the ability to resolve issues for themselves.
- Develop technological skills which will enable children to adapt and change to meet the ever-changing demands of a technological world.
- Encourage positive human interpersonal relationship skills.
- Foster intellectual curiosity and motivate children to want to explore and learn.
- Foster an interpersonal school environment where children can 'be themselves' without fear of ridicule or discrimination.
- Encourage responsibility and respect for the world community, resulting in service to others and in caring for their environment.



# OUR VISION

We strive to be a school of GROWTH.

# OUR VALUES

We believe God's laws outline standards of ethical behaviour based on His character of love. We have 8 School Values which students learn and are encouraged to display. They are Worship, Love, Compassion, Perseverance, Excellence, Courage, Contribution and Integrity.

## OUR VISION // OUR VALUES

WE LIVE OUT OUR VISION WHEN WE DISPLAY OUR VALUES.  
WE ARE REPRESENTING GOD'S CHARACTER OF LOVE.



# CURRICULUM



Our curriculum programmes are developed to follow the New Zealand Curriculum and are supported by a technology-rich digital learning environment. The Key Learning Areas of the New Zealand Curriculum are English (Literacy), Mathematics (Numeracy), Science, Social Sciences, Health and Physical Education, The Arts, Technology and Learning Languages. Our teachers bring a wide range of skills which they share with the students, providing real inspiration across a range of subjects. Every day our students are taught about God's love through the Adventist Bible Encounter Curriculum. Our teachers also integrate our Special Christian Character into all of our subject areas.

## EXTRA-CURRICULAR ACTIVITIES

The school choir, 'Voice of Hope,' is well-known in the community and sings regularly at various events and community organisations. The choir is made up of a group of singers who keenly practise once a week during school hours. A variety of songs from many genres are taught and performed with gusto at various venues throughout the year.

Senior members of the choir also form a smaller select group called the "Chimes of Hope", who play hand chimes in three-part harmony and are a firm favourite during performances.

We also offer extra-curricular music lessons via Kennedy School of Music.

After-school sport is also offered depending on interest. Currently our school enters teams into the following after-school competitions:

- Touch Rugby
- Futsal
- Summer Football
- Basketball



# ENROLMENT SCHEME



## INTRODUCTION

Southland Adventist Christian School is a State Integrated School under Education and Training Act 2020, Schedule 6, Clause 26 which states that, "the children of parents who have a particular or general philosophical or religious connection with a State integrated school must be preferred to other children for enrolment at the school." Therefore, for Southland Adventist Christian School, a preference applicant is a student whose family has, in the opinion of New Zealand Seventh-day Adventist Schools Association, established a particular connection with the School through membership of, or affiliation with, an Adventist Church, having a Biblical basis of faith consistent with the School's Statement of Special Character as described in the Integration Deed of Agreement or a general connection with the school through a demonstrated acceptance of this statement of Special Character.

The school's roll will be managed within the maximum roll prescribed in the school's integration agreement.

## PRIORITY IN ENROLMENT

Applications for enrolment at each year level will be processed in the following order of priority:

### FIRST PRIORITY

Will be given to preference applicants for whom the school is reasonably convenient [Note 1]. Students within this priority group are guaranteed enrolment unless including all of them would exceed the school's maximum roll.

If including all first priority applicants would exceed the school's maximum roll then criteria for selection will be based, in sequence of the following categories:

- a) will be given to children of Seventh-day Adventist Church Ministers;
- b) will be given to children of Southland Adventist Christian School employees;
- c) will be given to children of members of the Seventh-day Adventist Church;
- d) will be given to preference applicants who are siblings of current pupils;
- e) will be given to children of members of the Board of Trustees;
- f) will be given to preference applicants who are siblings of former pupils;
- g) will be given to preference applicants transferring from other Adventist schools;
- h) will be given to preference applicants who are children of former pupils



## SECOND PRIORITY

Will be given to non-preference applicants. Non-preference students will be enrolled only if enrolment places remain after all preference applicants have been enrolled and the board judges that enrolment of the non-preference students will not compromise its ability to offer places to preference students who might apply for enrolment at a later date. Priority among non-preference students will be given to students who meet one or more of the following criteria:

- Enrolment is sought at Year 0 or 1
- Proximity to the school.

Where the number of places available at any year level runs out within any of the category levels a) to h) above, priority in each category will be assigned based on the order in which the enrolment applications were received by the school.

Unsuccessful applicants at each year level will have their names recorded on a waiting list, within their relevant priority category, ranked in the order of the date in which the application was received by the school. The waiting list at each year level will remain current until the board next notifies the public that it is inviting applications for new enrolment intake.

## PRE-ENROLMENT

Each year applications will be sought by a date which will be published in a daily or community newspaper circulating in the area served by the school. No enrolments will be confirmed more than one year prior to the proposed date of entry.

## NOTES

1. Area of reasonable convenience – The Southland Region



# FINANCIAL INFORMATION

School expenses will be charged at the beginning of each term. Total payment for every term is required before the child can commence the next term (i.e. Term 1 must be totally paid before the child begins school in Term 2). Enrolment places for those who have unpaid fees may, at the Board's discretion, be re-allocated to others waiting to start school.

Fees may be paid by installments/direct bank credit or by prior arrangement with the school. Contact the Office Administrator or Principal for details. For unpaid accounts the Board will follow the procedures outlined in the Financial policy for the collection thereof – these procedures may be viewed at the school. The following costs are to be met by parents/caregivers:

## **Attendance dues:**

Attendance dues are compulsory, and paid to the proprietor which are used for capital development.

## **Bus Fees:**

This applies only to those who use the school bus service. The bus picks children up and drops them back at each individual house.

## **Technology Fee:**

All Year 7 and 8 students travel to Ascot Community School each week for Technology and each student must pay a fee to cover costs associated with this privilege.

## **After-School Sports Fee:**

Students who elect to participate in after school sports will be charged the appropriate fee. Fees differ depending on the sport and will be communicated to parents/caregivers during the sign-up process.

## **Special Character Donation:**

This donation is sent to the Proprietors to support teachers in their professional development and appraisal with regard to the Special Character.

## **Stationery:**

We have elected to subsidise stationery and charge a small fee to student accounts for the provision of this equipment. This ensures all students have the correct stationery as required by the classroom teacher.



# 2024 SCHOOL FEE SCHEDULE

The following amounts are charged to the Parents/Caregivers EACH TERM on the basis of a four term year per student – all charges are GST inclusive.

## **Attendance Dues:**

\$152.50 – funded by Bainfield Adventist Charitable Trust in 2024.

## **Student Bus Fee:**

One child - \$125

Two children - \$200

Three or more children - \$260

(Four or more children will only pay the same as three children)

## **Technology Fee:**

\$15 – Year 7 & 8 only

## **Special Character Donation (per student):**

One child - \$25

Two children - \$18.75

Three children - \$12.50

## **Stationery:**

\$20 per child per year





# CONTACT US

## PHYSICAL ADDRESS

21 DURHAM STREET, WAIKIWI, INVERCARGILL, 9810

## POSTAL ADDRESS

PO BOX 5007, WAIKIWI, INVERCARGILL, 9843

## PHONE

(03) 215 7904

## WEBSITE

[SACS.SCHOOL.NZ](http://SACS.SCHOOL.NZ)

## EMAIL

PRINCIPAL - [PRINCIPAL@SACS.SCHOOL.NZ](mailto:PRINCIPAL@SACS.SCHOOL.NZ)

OFFICE ADMINISTRATOR - [OFFICE@SACS.SCHOOL.NZ](mailto:OFFICE@SACS.SCHOOL.NZ)